

Reconstructive Microsurgery Fellowship at Fox Chase Cancer Center

One-year fellowship in Reconstructive Microsurgery

Goal: Prepare the trainee for a leadership role in multidisciplinary microsurgical procedures and complex reconstruction in an academic or community setting

Who We Are

Fox Chase Cancer Center is a National Cancer Institute (NCI)–designated Comprehensive Cancer Center and houses one of the oldest and most nationally recognized cancer programs in the nation. The Center includes a 100-bed hospital devoted entirely to cancer patients, an outpatient center that includes a facility for clinical cancer prevention and research, and the Institute for Cancer Research.

Fox Chase has a robust medical education program, offering surgical fellowships and residencies in a number of different specialties. Residents from the Lewis Katz School of Medicine at Temple University, including independent plastic surgery residents, also rotate at the Center.

The Reconstructive Microsurgery Fellowship at Fox Chase will provide comprehensive training and education across a wide array of microsurgical cases. Some highlights include:

- Approximately 130 free tissue transfers performed per year in addition to complex non-microsurgical reconstruction
- Participation in weekly conferences within the Division of Plastic Surgery and the Department of Surgical Oncology, as well as multidisciplinary tumor boards
- Funding for travel to the annual meeting of the American Society of Reconstructive Microsurgery (ASRM)



In addition to being a clinical and research facility, Fox Chase is an academic hub, training tomorrow's physicians and scientists today. Our supportive learning environment is consistently ranked as one of the best places for postdoctoral training in the United States.

Recognized Excellence

Comprehensive Cancer Center

In 1974, Fox Chase became one of only four hospitals in the country to earn the first designations of a Comprehensive Cancer Center by the NCI. Today, Fox Chase is one of 51 cancer centers in the country to hold such a distinction.



Founding NCCN Institution



Fox Chase is a founding member of the National Comprehensive Cancer Network (NCCN). We have faculty representation on every panel, contributing insight into the guidelines that set the standard of cancer care for physicians across the United States.

Nursing Excellence

Fox Chase is the first U.S. cancer center and the first hospital in Pennsylvania to earn Magnet designation for excellence in nursing services through the American Nurses Credentialing Center's (ANCC) Magnet Recognition Program. We have held this designation since 2000.



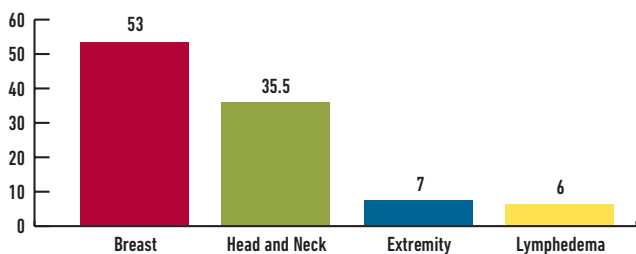
Bold Science



Fox Chase is a powerhouse of innovative research. With more than \$70 million in funding to support active research projects, and two Nobel Prizes, our award-winning research programs — coupled with discovery science and clinical care — remain the foundation of our work. Our translational medicine approach creates an environment in which we continuously search for new ways of applying basic science research in a clinical setting.

(continued on back)

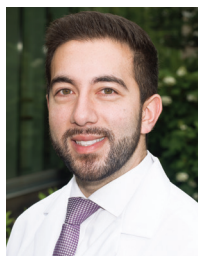
Average Annual Number of Microsurgical Cases by Anatomic Area



Average Annual Volume of Microsurgery

Number of Microsurgical Cases: **97**
Number of Free Flaps: **130**
Number of Microsurgical Anastomoses: **140**

Microsurgery Team



M. Shuja Shafqat, MD
Program Director,
Microsurgery Fellowship



Sameer Patel, MD, FACS



Neal Topham, MD, FACS



**Lisa Disandro-
Wetherhold, MS, PA-C**



Matthew Wetherhold, MS, PA-C

Application Process

The one-year Reconstructive Microsurgery Fellowship Program accepts one trainee annually.

The following information is required:

Completed application, available online at www.sfmatch.org

Copy of USMLE Step 1, 2, and 3 scores

CV

State Medical License

Personal statement

Three letters of recommendation, including one from your program director

Interview dates can be found on our website:

FoxChase.org/MicrosurgeryFellowship

Contact Information

Please request information from or mail completed application to:

Stephanie Ragsdale

Fellowship Coordinator

Fox Chase Cancer Center

333 Cottman Avenue, C-308

Philadelphia, PA 19111-2497

Phone: 215-728-3160

Fax: 215-728-2773

Stephanie.Ragsdale@fccc.edu

M. Shuja Shafqat, MD

Program Director,

Microsurgery Fellowship

Fox Chase Cancer Center

50 Huntingdon Pike, 3rd Floor

Rockledge, PA 19046

Phone: 215-728-3498

Shuja.Shafqat@fccc.edu



Temple Health refers to the health, education and research activities carried out by the affiliates of Temple University Health System (TUHS) and by the Lewis Katz School of Medicine at Temple University. TUHS neither provides nor controls the provision of health care. All health care is provided by its member organizations or independent health care providers affiliated with TUHS member organizations. Each TUHS member organization is owned and operated pursuant to its governing documents.

Non-discrimination notice:

It is the policy of Fox Chase Cancer Center, that there shall be no exclusion from, or participation in, and no one denied the benefits of, the delivery of quality medical care on the basis of race, ethnicity, religion, sexual orientation, gender, gender identity/expression, disability, age, ancestry, color, national origin, physical ability, level of education, or source of payment.

© Fox Chase Cancer Center. All rights reserved. 12/2020