



The Fox Chase **Difference**

Treatment outcomes at Fox Chase Cancer Center



For cancer patients, getting the right care—
from experts with the knowledge and experience
to provide the best treatment options—can mean
the difference between life and death.

Making Informed Decisions

For cancer patients, getting the right care—from experts with the knowledge and experience to provide the best treatment options—can mean the difference between life and death. But finding that care can be daunting, especially since cancer hospitals rarely share information about their treatment results.

Fox Chase Cancer Center believes in empowering patients with the knowledge to make the healthcare decisions that are right for them. That's why Fox Chase recently became one of the first cancer centers in the country to publish its clinical outcomes. Five-year survival rates for patients treated for several major cancers—breast, colorectal, lung, and prostate—are available at www.foxchase.org/outcomes, with Fox Chase outcomes compared to those of large and small community-hospital cancer programs. **In nearly all categories, patients treated at Fox Chase survive longer.**

Recognized Experts

Fox Chase is a National Cancer Institute-designated comprehensive cancer center. That elite title recognizes excellence in patient care, as well as in laboratory, behavioral, and clinical research. Fox Chase integrates the work of its clinicians and researchers to advance the understanding of cancer and offer leading-edge, compassionate care to patients.

Founded in 1904 as one of the first cancer hospitals in the country, Fox Chase offers a full spectrum of cancer-related services, from prevention to treatment to survivorship support. The Center's scientists have won the highest awards in their fields, including two Nobel Prizes, and its doctors are national leaders in innovative techniques from minimally invasive surgery to radiation therapy technologies. In pursuit of its mission to prevail over cancer, the Center is leading transformative developments in cancer genetics and personalized medicine and offers about 200 clinical trials at any time that give patients access to the latest medical advances.

Behind the Data

The publication of its clinical outcomes reflects Fox Chase's dedication to transparency and service to patients. "We are committed to helping the public become more informed when making decisions about their health care," says Center president and CEO Michael V. Seiden. "We hope this data will enable patients to make the choices that are right for them."

It is also important that patients understand the data's limitations. For example, it cannot predict the outcome of individual cases. In addition, patient populations and diagnostic criteria can differ from one institution to the next, preventing precise, "apples-to-apples" comparisons. For these reasons, the publication of clinical outcomes is a topic of debate among healthcare providers. Fox Chase published its outcomes only after lengthy and thoughtful consideration. "Ultimately, I think it's being responsible," Seiden says of the decision. "We have this data; shouldn't patients have access to it?"

Reading the charts

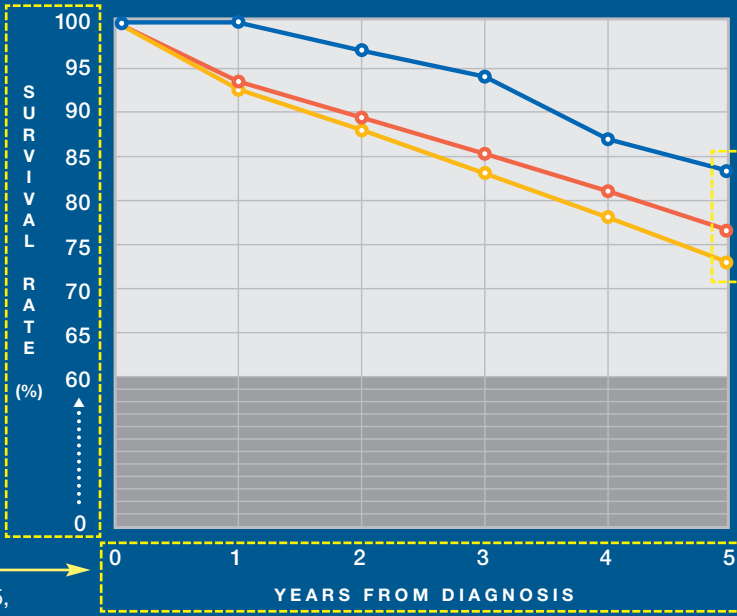
Stage of cancer at time of diagnosis

STAGE I

Survival rate:

The percentage of each patient group still living at any point is measured on the vertical axis, from 0 to 100. Survival rates reflect deaths from all causes, including those unrelated to cancer.

(Vertical scaling is condensed on some charts, as shown here, for readability.)



Time from diagnosis

is shown in years, from 1 to 5, on the horizontal axis. Patients were diagnosed between 1998 and 2002 and followed for five years. (At the time of publication, 2002 was the most recent year for which five-year follow-up information was available.)

The hospitals

whose patient outcomes are compared in the charts. (See page 4 for descriptions.)

- Fox Chase Cancer Center
- Community hospital comprehensive cancer programs
- Community hospital cancer programs

Example: This chart, which shows outcomes for **Stage I colorectal cancer**, reflects a five-year survival rate for Fox Chase patients of 83.2 percent, compared to an average of 76.4 percent for patients treated at larger community-hospital cancer programs and 73.7 percent for those treated at smaller such programs. (Data source: National Cancer Data Base, maintained by the American College of Surgeons)

Number of Fox Chase patients followed:
Stage I: 66, Stage II: 113, Stage III: 142, Stage IV: 155

Number of Fox Chase patients represented on each chart: Only patients with a single cancer diagnosis who received their initial treatment at Fox Chase were included.



frequently asked questions

Which hospitals' outcomes are compared in the charts?

The charts compare outcomes for patients treated at Fox Chase, a federally designated comprehensive cancer center, to those treated at two types of community-hospital cancer programs, which are distinguished based on level of service and patient volume. *(Hospital categories are defined by the National Cancer Data Base, source of the outcomes data.)*

Fox Chase Cancer Center is a National Cancer Institute-designated comprehensive cancer center, meaning that it engages in both basic and clinical research, in addition to patient care, and meets peer-reviewed standards. It sees about 33,000 patients each year and provides a full range of diagnostic and treatment services.

Community hospital comprehensive cancer programs diagnose and/or treat 650 or more cases each year. They provide a full range of services for the diagnosis and treatment of cancer, either onsite or by referral, and also conduct clinical research.

Community hospital cancer programs diagnose and/or treat 100 to 649 cases each year. They provide a full range of diagnostic and treatment services, but patients often need to be referred elsewhere for part of their treatment.

What do the charts tell me?

The charts show the overall survival rates, year by year for five years from diagnosis, of groups of patients with the indicated type and stage of cancer. They compare those treated at Fox Chase to those treated at large and small community-hospital cancer programs.

What do the charts NOT tell me?

The data reflects results among particular groups of patients; it does not predict the course of individual cases. Nor does it account for factors such as gender or age at diagnosis—which can affect outcomes—or differences in hospitals' methods of categorizing cancer stages.

Which patients are included in this data?

Only patients with a single cancer diagnosis who received all or part of their first course of therapy at Fox Chase or the relevant community hospital were included; patients who received treatment elsewhere before coming to Fox Chase were not included. (For that reason, the number of Fox Chase patients represented on each chart may be much smaller than the total number treated at Fox Chase for that type of cancer.)

Why were these particular cancers selected?

Breast, colon, lung, and prostate cancer are among the most common cancers in the United States and the most often treated at the Center. Because the criteria for inclusion limit the number of patients who qualify (*see above*), Fox Chase determined that it treated too few qualifying patients to publish useful results for other cancers at this time. The Center plans to publish additional data as it becomes available.

Why does the data extend only through 2002?

The charts reflect survival rates for patients diagnosed between 1998 and 2002 and followed for five years. At the time the data was generated, 2002 was the most recent year for which five-year follow-up information was available. Fox Chase plans to publish new data as it becomes available; for updates, visit www.foxchase.org/outcomes.

Where does the data come from?

The data for the charts is provided by the National Cancer Data Base, one of the most comprehensive cancer databases in the country. A program of the Commission on Cancer and the American Cancer Society, it records data for 1,400 Commission-accredited cancer programs in the United States and Puerto Rico. It is maintained by the American College of Surgeons.

For more information, visit www.foxchase.org/outcomes.

breast cancer treatment

AT FOX CHASE CANCER CENTER

The Women's Cancer Center at Fox Chase offers comprehensive, multidisciplinary care for breast cancer patients, as well as a full complement of innovative research, treatment, and wellness resources for women with breast or gynecologic cancers.

Patients newly diagnosed with breast cancer can meet with a team of specialists including a surgeon, medical oncologist, and radiation oncologist during a one-day visit to the Breast Evaluation Center—part of the Women's Cancer Center—to develop an individualized treatment plan. Throughout this process, they are assisted by patient navigators who provide support with wellness, stress reduction, and quality-of-life issues.

Advanced treatment options available from the Center's team of internationally recognized experts include:

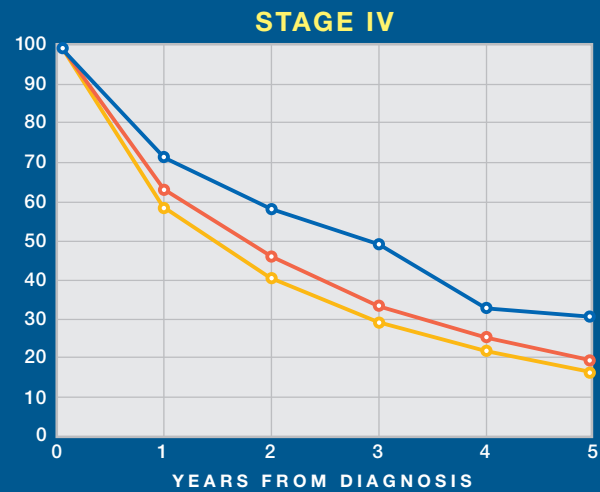
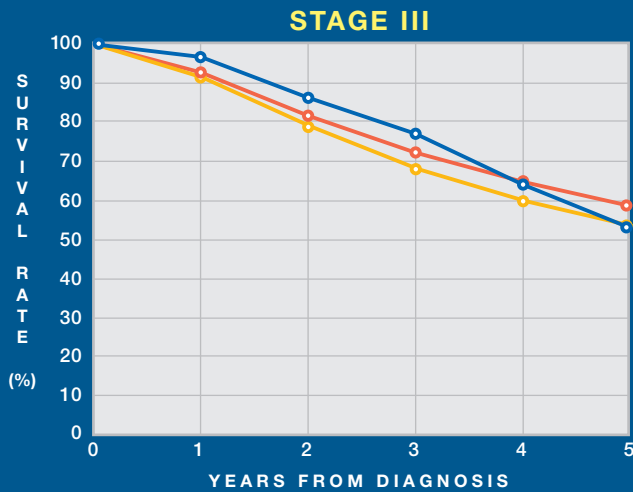
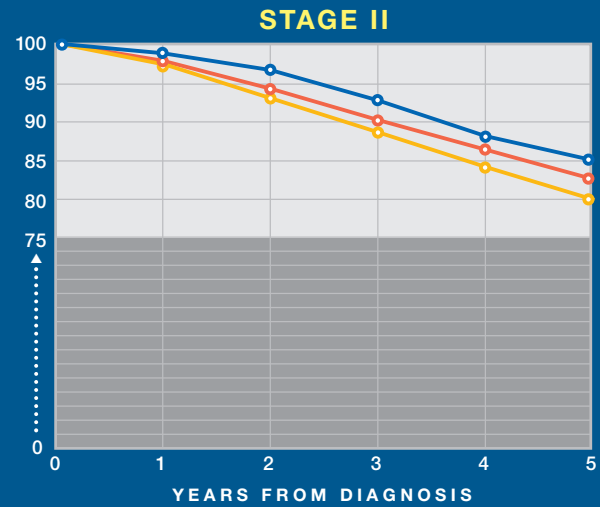
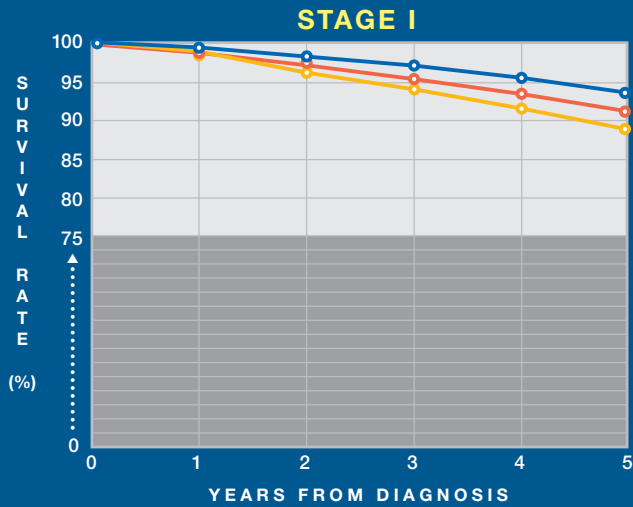
- Biologic therapies that target cancer cells while sparing normal tissue.
- Reconstructive surgery using advanced microvascular techniques.
- Intensity-modulated radiation therapy, or IMRT, and Mammosite™ radiation therapy, both of which provide highly targeted treatment.

The Center also specializes in the diagnosis and treatment of inflammatory breast cancer, a rare and aggressive form of the disease that often goes misdiagnosed. Patients with any stage or type of breast cancer have the opportunity to participate in national clinical trials, many developed and led by Fox Chase physicians.

Women at a heightened risk of breast or ovarian cancer based on their family history can seek risk counseling, prevention education, and genetic testing, if appropriate, through the Center's Risk Assessment Program.



B R E A S T C A N C E R O U T C O M E S



- Fox Chase Cancer Center
- Community hospital comprehensive cancer programs
- Community hospital cancer programs

See page 4 for descriptions.

Number of Fox Chase patients followed:
Stage I: 697, Stage II: 540, Stage III: 89, Stage IV: 46

colorectal cancer treatment

AT FOX CHASE CANCER CENTER

Colorectal cancer is one of the most common cancers, and one of the most preventable. Almost 90 percent of patients survive when the cancer is detected early. At Fox Chase, a multi-disciplinary team is dedicated to prevention, precise diagnosis, and effective treatment.

The Center's surgeons work closely with medical and radiation oncologists, gastroenterologists, pathologists, and radiologists to offer patients a full range of treatment options. Therapies are tailored to the individual with the aim of preserving normal function, optimizing quality of life, and maximizing the likelihood of a cure.



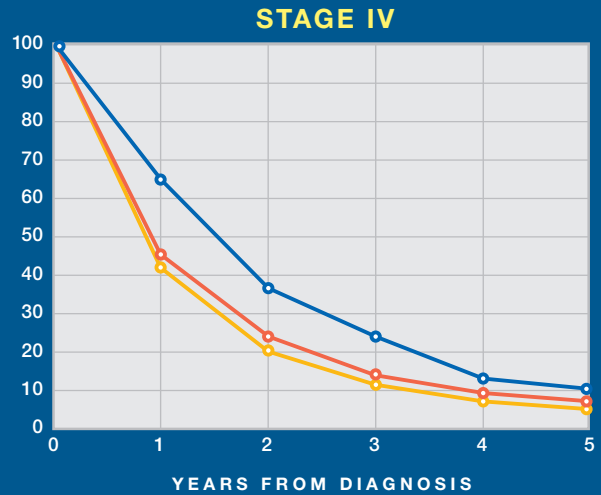
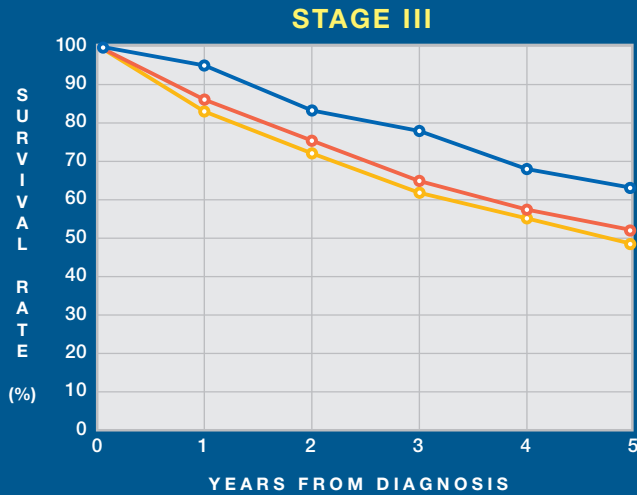
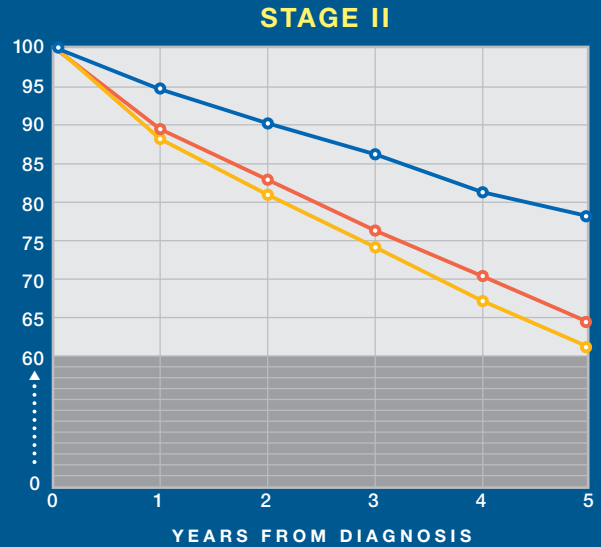
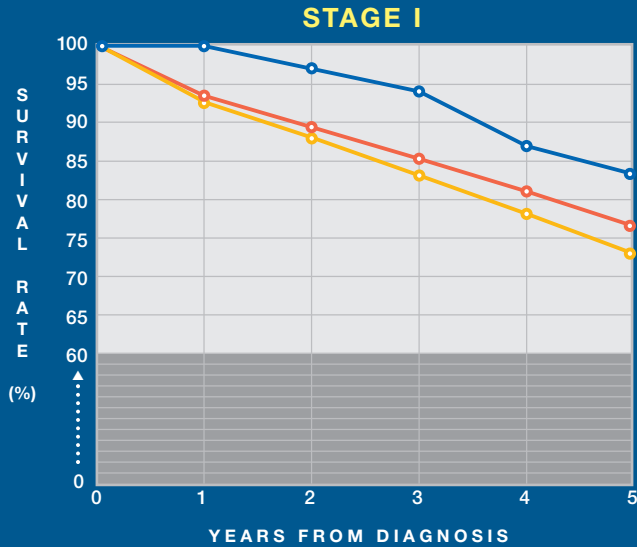
Fox Chase provides leading-edge treatments including:

- Nerve-sparing surgery for rectal cancer, designed to maintain bladder and sexual function.
- Pre-operative chemotherapy and radiation therapy to minimize the need for a permanent colostomy.
- Minimally invasive surgical techniques including laparoscopic, single-incision laparoscopic, and robotic surgery.
- Individually tailored chemotherapy, including biologic therapies that target specific cancer cells.

The Center also designs and conducts clinical trials that give patients with various stages of colorectal cancer early access to the latest treatments.

Healthy individuals at heightened risk for colorectal cancer have access to assessment and screening, genetic counseling, and education about prevention through the Risk Assessment Program. Participants also may be eligible for clinical studies aimed at preventing colorectal tumors.

COLORECTAL CANCER OUTCOMES



- Fox Chase Cancer Center
- Community hospital comprehensive cancer programs
- Community hospital cancer programs

See page 4 for descriptions.

Number of Fox Chase patients followed:
 Stage I: 66, Stage II: 113, Stage III: 142, Stage IV: 155

lung cancer treatment

AT FOX CHASE CANCER CENTER

Fox Chase stands at the forefront of state-of-the-art treatment for all types and stages of lung cancer, including complex, recurring, and inoperable cases. The Center's lung cancer team includes internationally recognized thoracic surgeons, medical oncologists, radiation oncologists, and pulmonologists.

Fox Chase physicians also are among the nation's leaders in lung cancer research, and they develop, direct, and participate in national clinical trials of diagnostic and therapeutic tools.

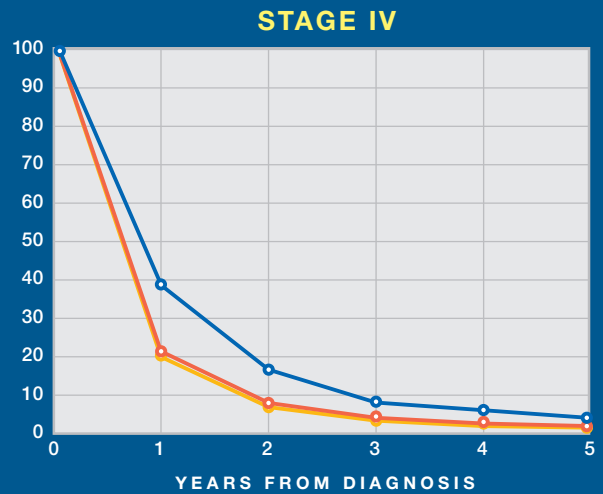
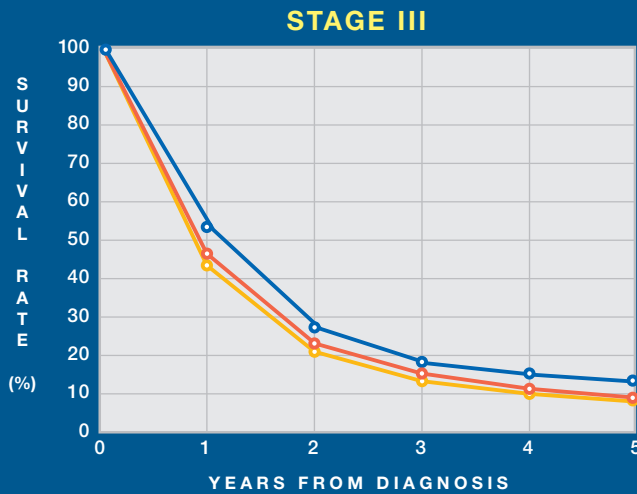
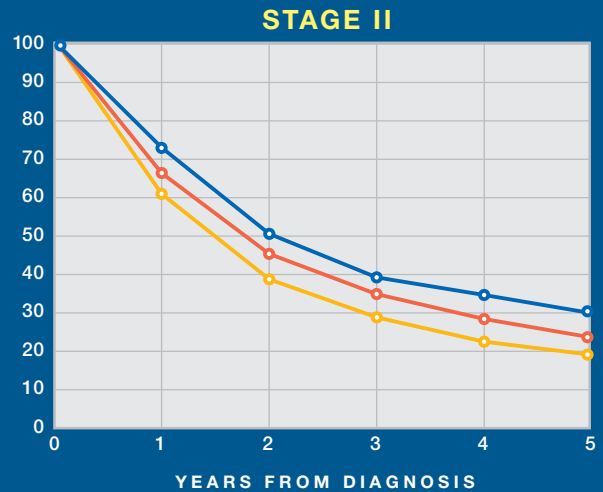
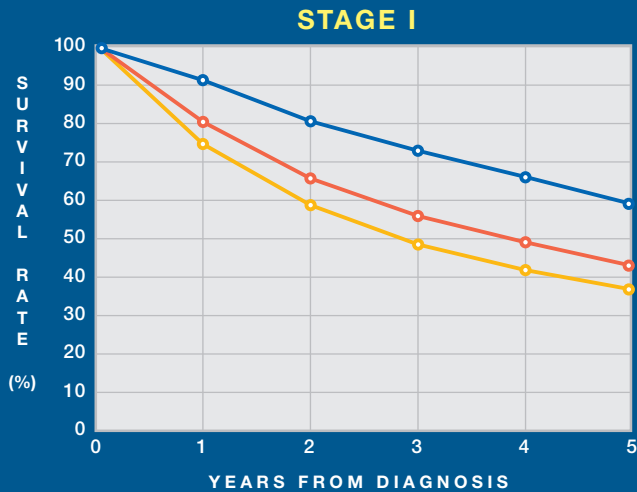


Innovative lung cancer treatment options at Fox Chase include:

- Minimally invasive techniques such as video-assisted thoracic surgery (VATS), which reduce pain and speed recovery. Robot-assisted thoracic surgery using the da Vinci® system also enables a more precise surgery.
- Clinical trials for patients with early or advanced small-cell and non-small-cell lung cancers, as well as those with multiple primary sites and marginal pulmonary function.
- Techniques such as radiofrequency ablation, which uses radiofrequency waves to generate heat that destroys the tumor; stereotactic radiotherapy, which precisely delivers high doses of radiation in a short time; and photodynamic therapy, a noninvasive method that targets cancer cells without damaging healthy tissues.

Fox Chase also emphasizes prevention and early detection of lung cancer and offers a smoking-cessation program to help patients reduce their risk.

L U N G C A N C E R O U T C O M E S



- Fox Chase Cancer Center
- Community hospital comprehensive cancer programs
- Community hospital cancer programs

See page 4 for descriptions.

Number of Fox Chase patients followed:
 Stage I: 139, Stage II: 74, Stage III: 307, Stage IV: 407

prostate cancer treatment

AT FOX CHASE CANCER CENTER

An internationally recognized leader in the treatment of prostate cancer, Fox Chase cares for thousands of prostate cancer patients each year, including those with advanced stages of the disease. The Center's highly experienced physicians are renowned for their expertise in detection, treatment, and prevention.

The prostate cancer treatment program at Fox Chase offers:

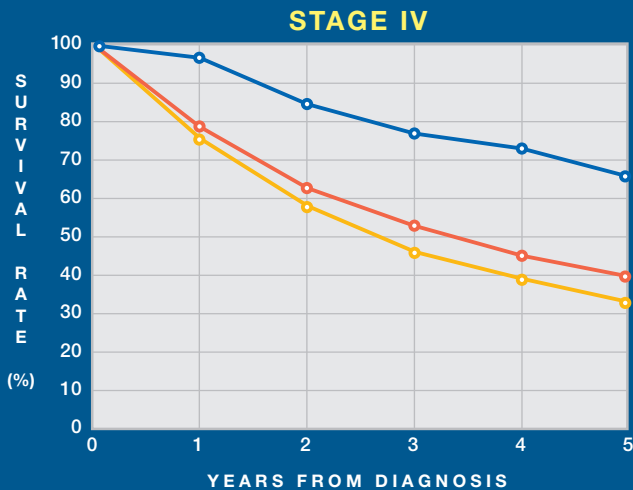
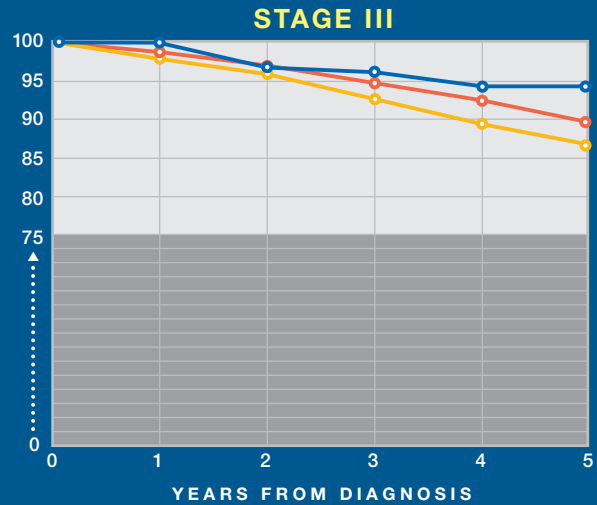
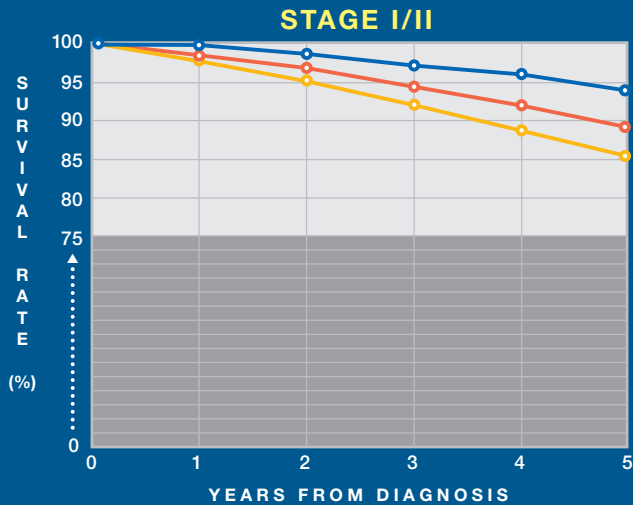
- Highly skilled surgeons who specialize in robot-assisted minimally invasive surgery, considered the latest surgical advance in the treatment of prostate cancer. The Center is home to the top oncologic robotic surgery program in the Philadelphia region.
- Extensive expertise in performing nerve-sparing "open" surgery to preserve the nerves and blood vessels critical to normal urinary and sexual function.
- World-class pathologists who assess prostate tissue post-surgery and help physicians assess the need for additional therapies.
- Clinical trials that offer early access to promising new treatments for patients with advanced or metastatic cancers.

Fox Chase physicians discuss all options with the patient and tailor treatment to the individual based on cancer stage, lifestyle, and medical condition.

Men at a heightened risk of prostate cancer based on race or family history can access screening, risk counseling, prevention education, and genetic testing, if appropriate, through the Center's Risk Assessment Program.



PROSTATE CANCER OUTCOMES



Stages I and II are combined due to the particular method of assigning stages for prostate cancer, in which type of treatment and method of detection historically have been factors in assigning stage.

- Fox Chase Cancer Center
- Community hospital comprehensive cancer programs
- Community hospital cancer programs

See page 4 for descriptions.

Number of Fox Chase patients followed:
Stage I/II: 1475, Stage III: 163, Stage IV: 57

FOX CHASE CANCER CENTER
333 COTTMAN AVENUE
PHILADELPHIA, PA 19111

NON-PROFIT ORG.
U.S. POSTAGE
PAID
PHILADELPHIA, PA
PERMIT NO. 3187

O U R M I S S I O N

To prevail over cancer,

marshaling heart and mind in bold scientific discovery,
pioneering prevention, and compassionate care.

For more information or to make an appointment,
call 1-888-FOX-CHASE (1-888-369-2427)
or visit www.foxchase.org.



Published in 2011 by the communications department of Fox Chase Cancer Center.
Inquires: Email Editor@fcc.edu or call 215-728-4788. Design: Karlyn Rosen Aires